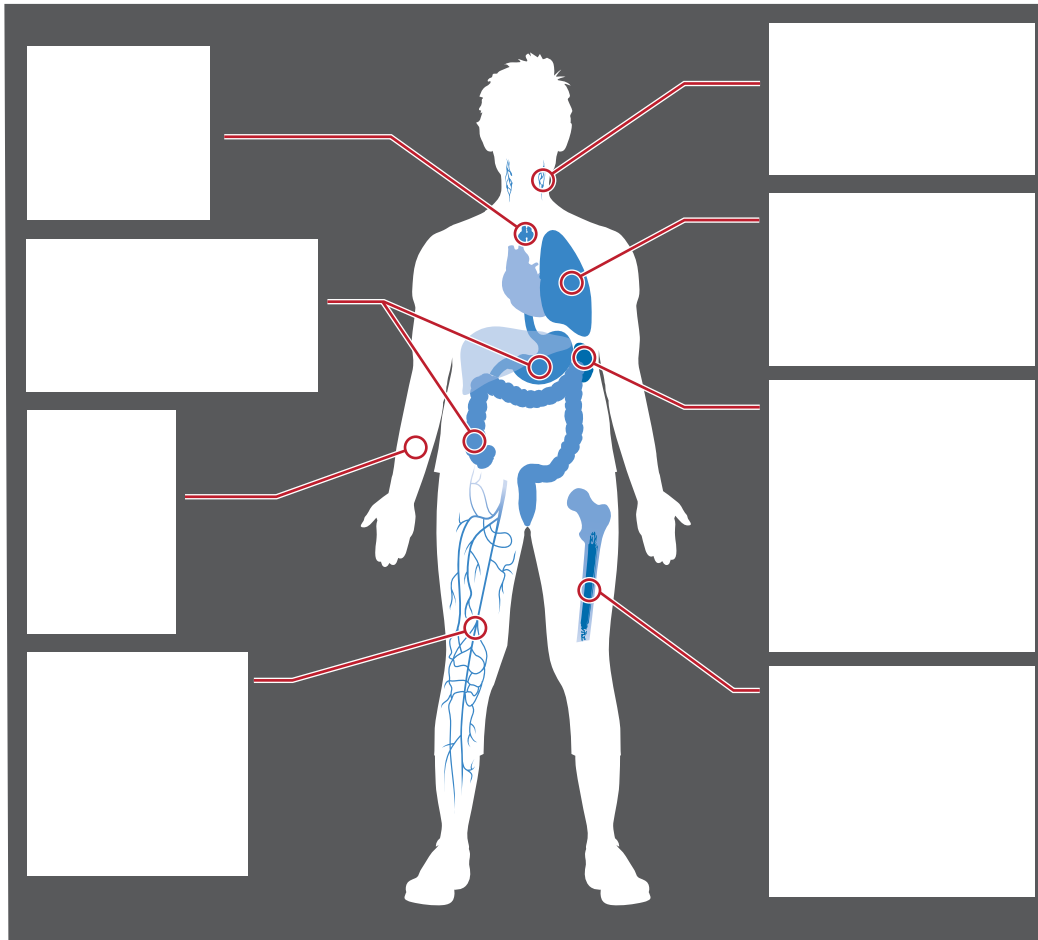


What is an Immune System?

1. Label the diagram with the following items: bone marrow, lymph nodes, respiratory system, skin, white blood cells, spleen, stomach and intestines, and thymus.



Types of Pathogens

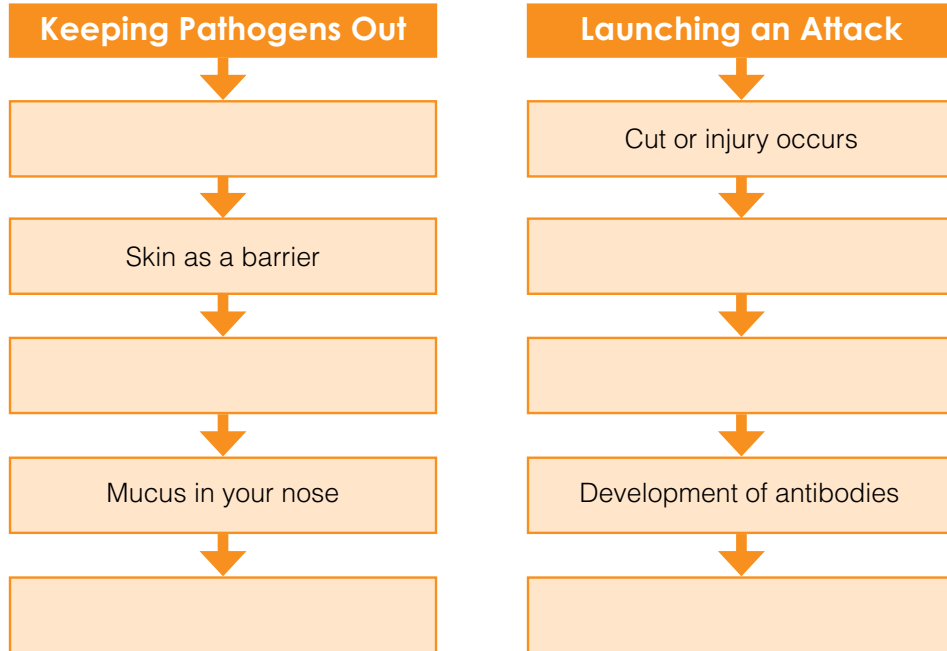
2. Anything foreign that enters your body and can cause a disease is called a pathogen. Fill in the boxes by providing examples of each type of pathogen.

Virus

Bacteria

Keeping Invaders Out and Launching an Attack

3. Your body has several ways it tries to keep pathogens out. Describe how the body works to keep pathogens out and how your body launches an attack by completing the table below.



What Influences Your Immune System?

4. List and describe four ways stress might affect your immune system.

- 1. _____
- 2. _____
- 3. _____
- 4. _____

Problems With the Immune System

5. List four problems you might have with your immune system.
